



15 Teasdale Close

Chadderton, Oldham, OL9 8AS

Asking Price £204,950

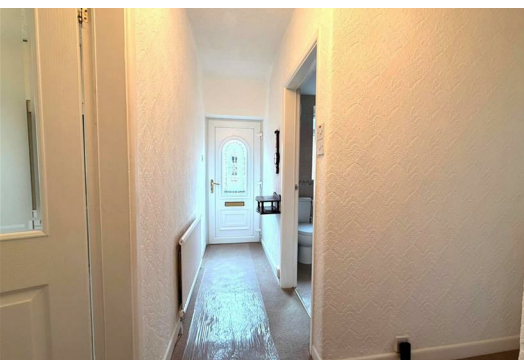


SEMI-DETACHED TRUE BUNGALOW | NO ONWARD CHAIN | DRIVEWAY & GENEROUS REAR GARDEN

This deceptively spacious two-bedroom semi-detached true bungalow with a dormer is ideally positioned in a popular and highly sought-after area, making it perfect for first-time buyers, families, or those looking to downsize.

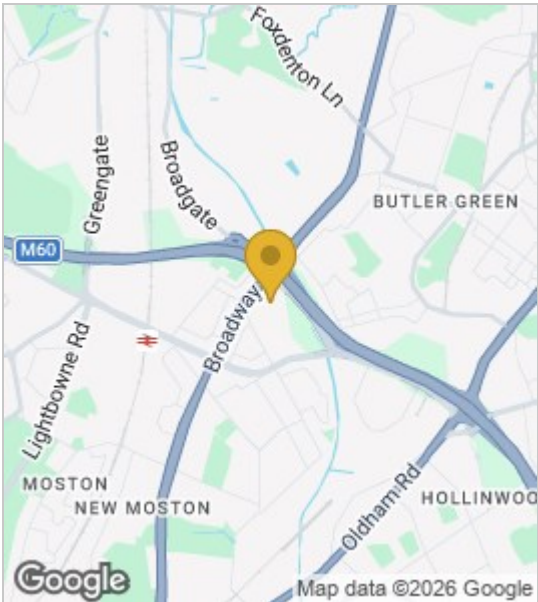
The well-presented accommodation comprises a welcoming entrance hallway, two reception rooms including a bright and comfortable living room and a separate dining room, a fitted kitchen, and two generous double bedrooms.

The property also benefits from a modern shower room, uPVC double glazing, and gas combi central heating throughout.



- Living Room
- Dinning Room
- Kitchen
- Bathroom
- Bedroom 1 downstairs
- Bedroom 2 upstairs

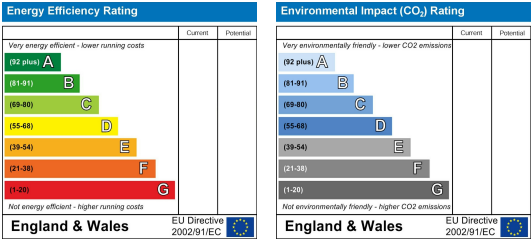
Area Map



Floor Plans



Energy Efficiency Graph



These particulars, whilst believed to be accurate are set out as a general outline only for guidance and do not constitute any part of an offer or contract. Intending purchasers should not rely on them as statements of representation of fact, but must satisfy themselves by inspection or otherwise as to their accuracy. No person in this firms employment has the authority to make or give any representation or warranty in respect of the property.

